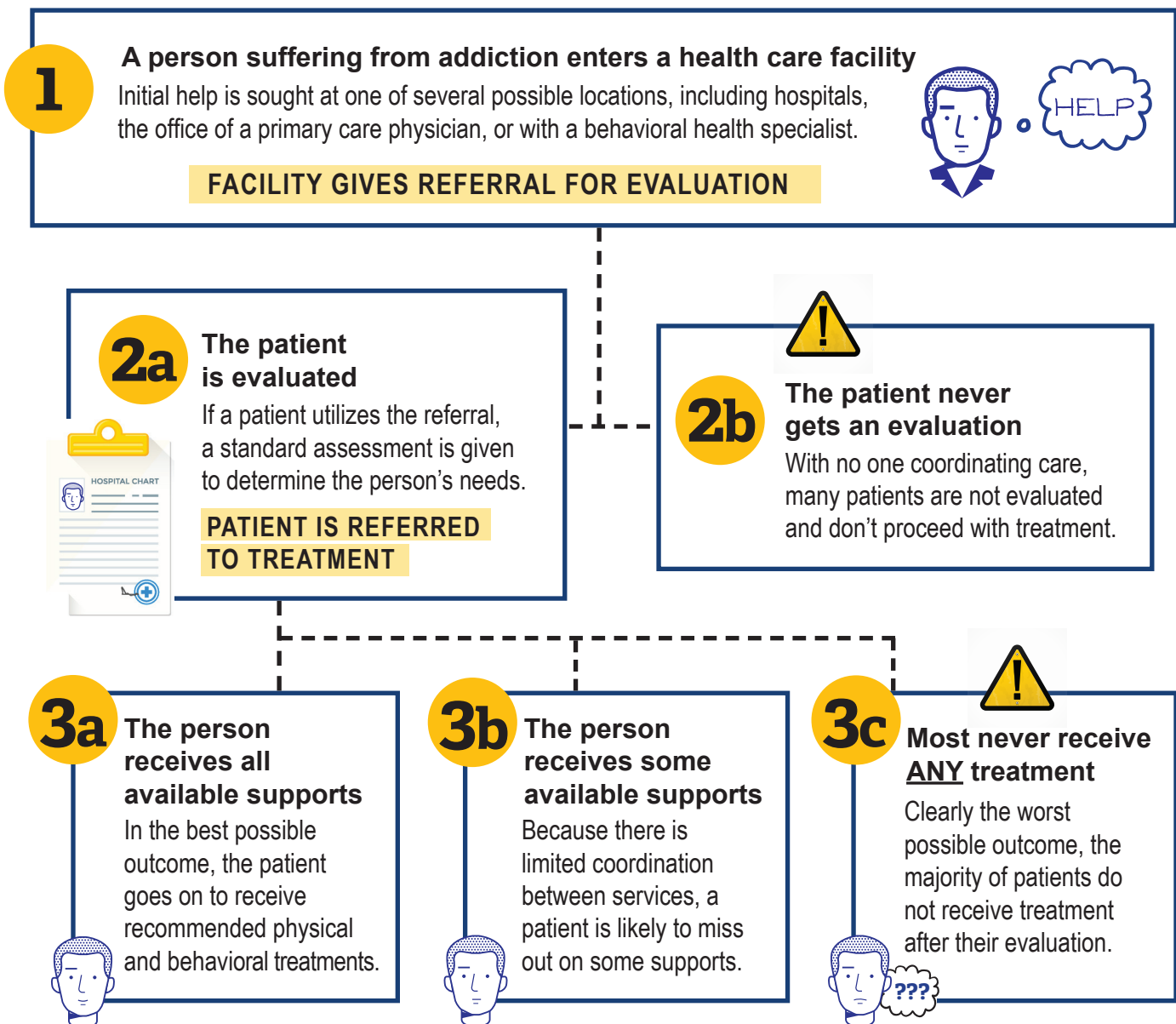


TREATMENT FOR HEROIN AND OPIOID ADDICTION

THE CURRENT PROCESS

The treatment path for people who have opioid-related substance use disorder can be difficult for patients to navigate. Without professional coordination of care, many drop out of treatment before they attend follow-up appointments to help them with all of their symptoms (physical and behavioral) and without vital community supports in place.

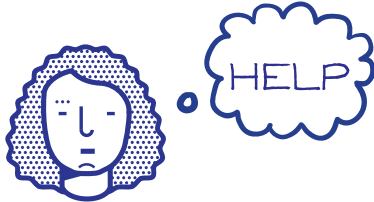


KEEPING PEOPLE IN CARE

CENTERS OF EXCELLENCE

Centers of Excellence help ensure that people with opioid-related substance use disorder stay in treatment to receive follow-up care and are supported within their communities. Managed care teams coordinate care and provide warm transitions to new parts of the treatment process. Ideally, it would look like this:

1



A person suffering from addiction enters a health care facility

Initial help is sought at one of several possible locations, including hospitals, the office of a primary care physician, or with a behavioral health specialist.

2



With informed consent, someone from the health care facility notifies the Center of Excellence team

The Center of Excellence health team professional arrives on site and completes an assessment to determine needs. The patient is referred to treatment at the appropriate level of care.

4



Person receives all available supports, coordinated by team

The care team oversees everything, from evaluation to the referral process, through follow-up care. The care team facilitates warm hand-offs between all available behavioral and physical health treatments.



3

Center of Excellence Team ensures coordination of care

In addition to the patient and their family (with the patient's consent), the care management team includes:

- behavioral & physical health care providers
- community-based care navigators
- community-based resources (food, housing, jobs, etc.)

